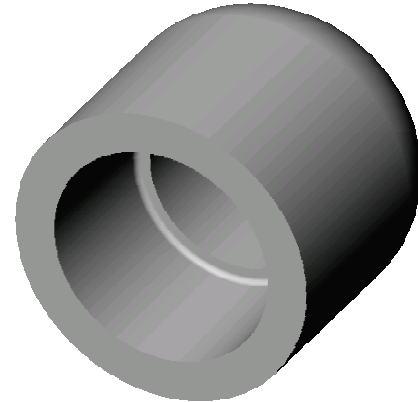
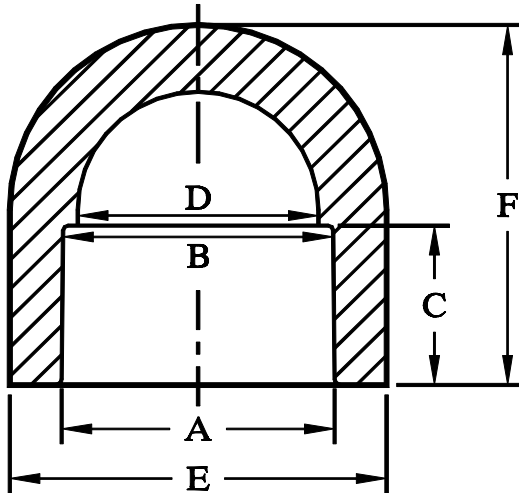


END CAPS

SOCKET FUSION FITTINGS

(SOCKET) IPS & CTS

FOR REFERENCE ONLY



NOMINAL SIZE	A DIAMETER	B DIAMETER	C DEPTH	D I.D.	E O.D.	G O.A.L.
1/2" CTS	.585 ^{+0.010} _{-.007}	.575 ^{+0.010} _{-.007}	.667	.520 ±.010	1.090 ±.032	1.32
	14.86 mm	14.61 mm	16.94 mm	13.21 mm	27.69 mm	33.5 mm
1/2" IPS	.810 ^{+0.005} _{-.010}	.804 ^{+0.005} _{-.026}	.660	.705 ±.015	1.230 ±.032	1.37
	20.57 mm	20.42 mm	16.76 mm	17.91 mm	31.24 mm	34.8 mm
3/4" IPS	1.020 ±.008	1.012 ^{+0.008} _{-.012}	.738	.916 ±.015	1.452 ±.032	1.56
	25.91 mm	25.70 mm	18.75 mm	23.27 mm	36.88 mm	39.6 mm
1" CTS	1.075 ±.008	1.070 ^{+0.008} _{-.012}	.984	.957 ±.015	1.460 ±.032	1.82
	27.31 mm	27.18 mm	24.99 mm	24.31 mm	37.08 mm	46.2 mm
1" IPS	1.275 ±.008	1.267 ^{+0.008} _{-.012}	.778	1.150 ±.015	1.837 ±.032	1.78
	32.39 mm	32.18 mm	19.76 mm	29.21 mm	46.66 mm	45.2 mm
1 1/4" IPS	1.620 ±.008	1.612 ^{+0.008} _{-.016}	.983	1.480 ±.015	2.288 ±.032	2.23
	41.15 mm	40.94 mm	24.97 mm	37.59 mm	58.12 mm	56.6 mm
1 1/2" IPS	1.860 ±.010	1.849 ^{+0.010} _{-.020}	.981	1.630 ±.015	2.551 ±.032	2.00
	47.24 mm	46.96 mm	24.92 mm	41.40 mm	64.80 mm	50.8 mm
2" IPS	2.335 ±.010	2.324 ^{+0.010} _{-.020}	.997	2.197 ±.015	3.282 ±.020	2.23
	59.31 mm	59.03 mm	25.32 mm	55.80 mm	83.36 mm	56.6 mm
3" IPS	3.455 ±.015	3.439 ^{+0.015} _{-.025}	1.193	3.210 ±.130	5.050 ±.130	3.05
	87.76 mm	87.35 mm	30.30 mm	81.53 mm	128.27 mm	77.5 mm
4" IPS	4.450 ±.015	4.434 ±.005	1.315	4.230 ±.130	6.460 ±.130	3.97
	113.03 mm	112.62 mm	33.40 mm	107.44 mm	164.08 mm	100.8 mm