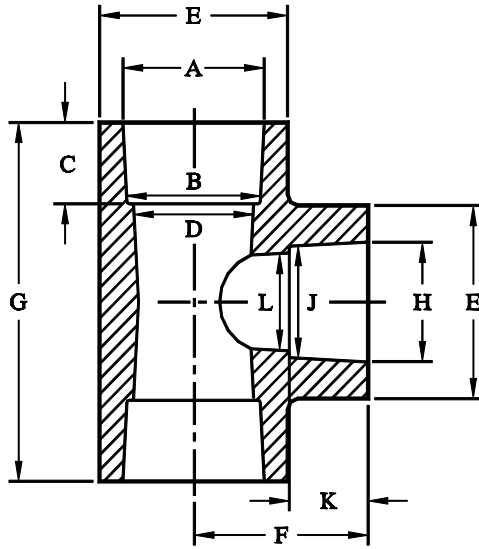


# REDUCING TEES

## SOCKET FUSION FITTINGS

(SOCKET) IPS

FOR REFERENCE ONLY



NOMINAL SIZE	A DIAMETER	B DIAMETER	C DEPTH	D I.D.	E O.D.	F LENGTH	G O.A.L.	H DIAMETER	J DIAMETER	K DEPTH	L I.D.
3/4" x 3/4" x 1/2" IPS	1.020 ±.008	1.012 <sup>+.008</sup> -.012	.725	.875 ±.015	1.500 ±.032	1.63	3.25	.810 ±.008	.804 <sup>+.005</sup> -.026	.650	.687 ±.015
	25.91 mm	25.70 mm	18.42 mm	22.23 mm	38.10 mm	41.4 mm	82.6 mm	20.57 mm	20.42 mm	16.51 mm	17.45 mm
1" x 1" x 1/2" IPS	1.275 ±.008	1.267 <sup>+.008</sup> -.012	.750	1.125 ±.015	1.850 ±.032	1.69	3.38	.810 ±.008	.804 <sup>+.005</sup> -.026	.650	.687 ±.015
	32.39 mm	32.18 mm	19.05 mm	28.58 mm	46.99 mm	42.9 mm	85.9 mm	20.57 mm	20.42 mm	16.51 mm	17.45 mm
1" x 1" x 3/4" IPS	1.275 ±.008	1.267 <sup>+.008</sup> -.012	.750	1.125 ±.015	1.850 ±.032	1.69	3.38	1.020 ±.008	1.012 <sup>+.008</sup> -.012	.650	.875 ±.015
	32.39 mm	32.18 mm	19.05 mm	28.58 mm	46.99 mm	42.9 mm	85.9 mm	25.91 mm	25.70 mm	16.51 mm	22.23 mm